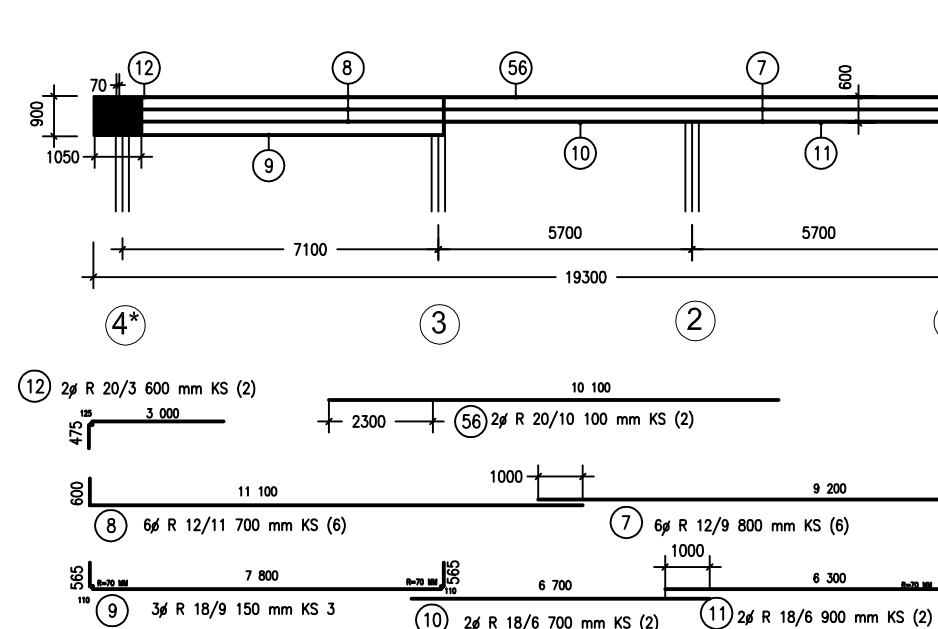
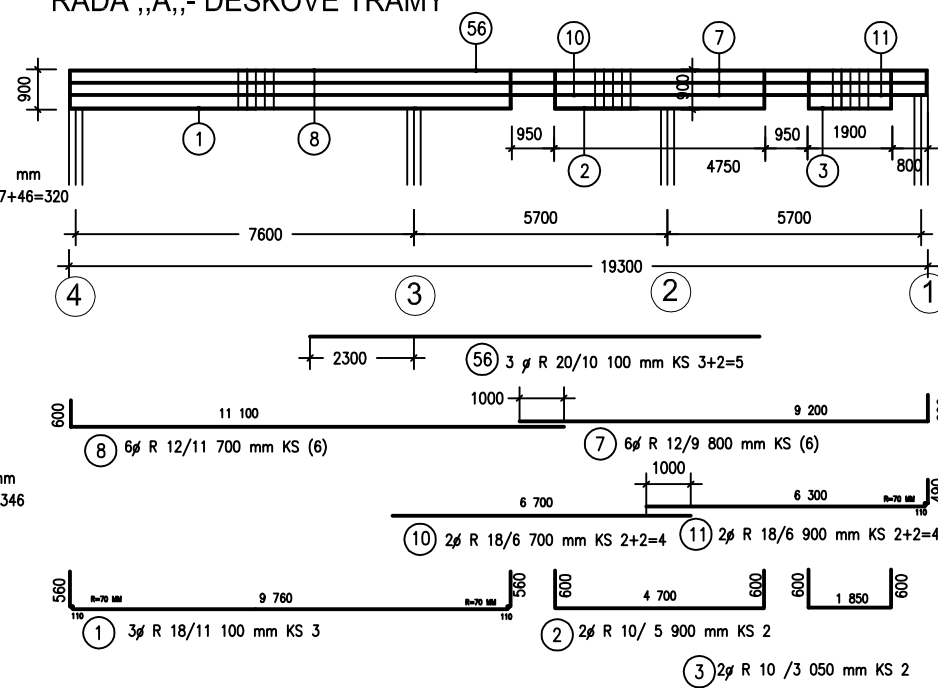
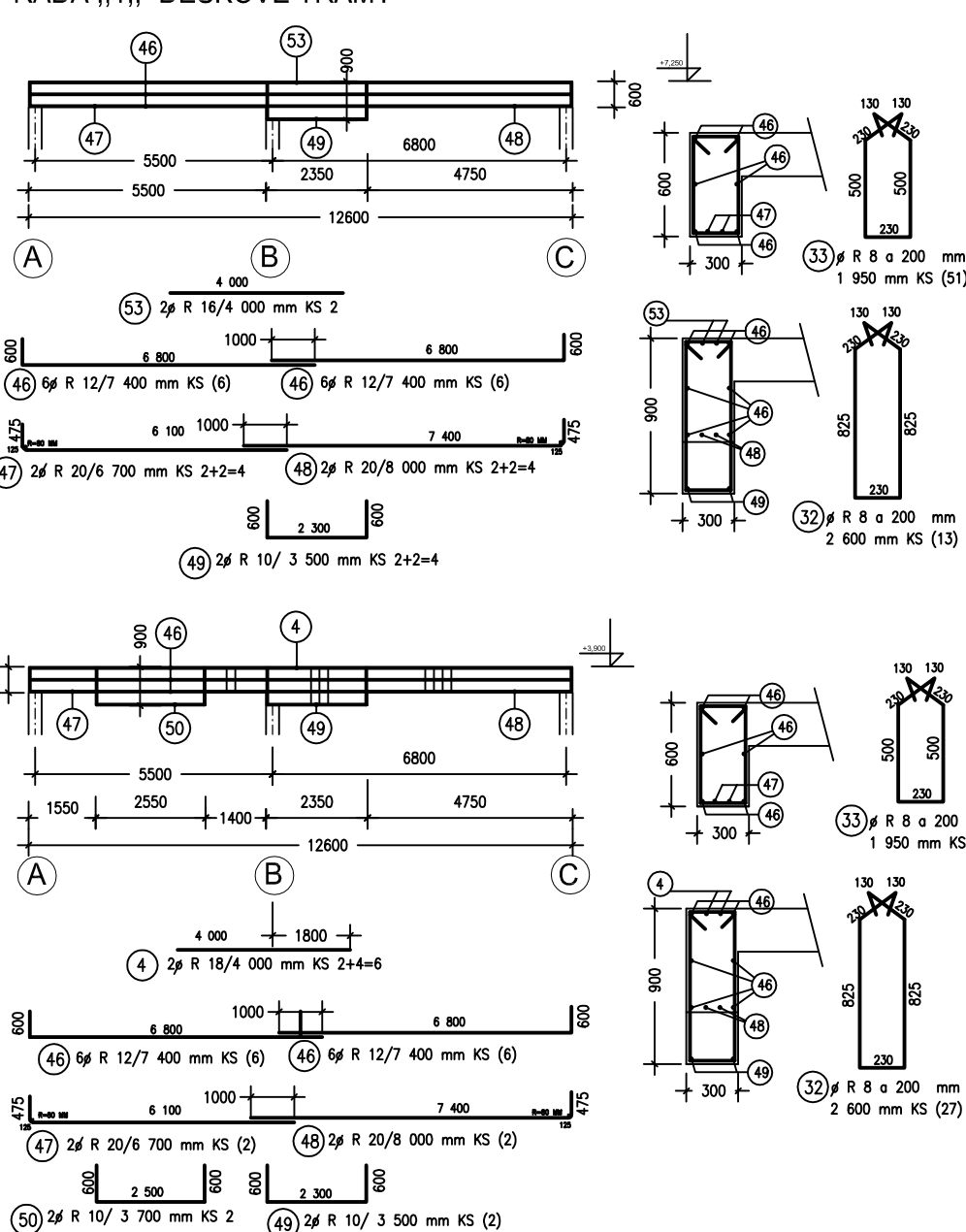


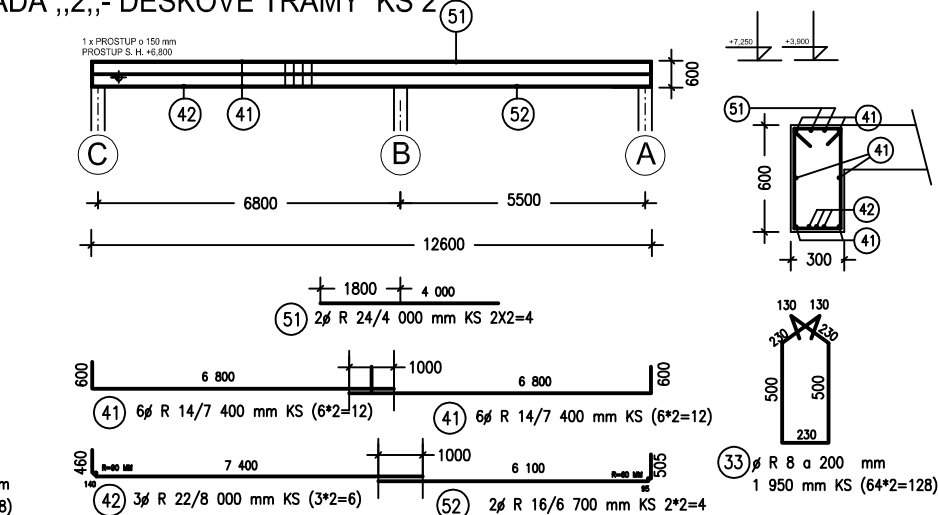
## ŘADA „A„- DESKOVÉ TRÁMY



## ŘADA „1,- DESKOVÉ TRÁMY



ŘADA „2,- DESKOVÉ TRÁMY KS 2 (51)



Technical drawing of a bridge structure, showing plan, elevation, and cross-section views.

**Plan View (Top):** Shows the bridge layout with spans of 6800, 12600, and 5500. The total length is 24900. The bridge is supported by piers labeled C, B, and A. The structure is labeled "2 x PRC/STUP 20x100 PROTECT 2-15-16/80".

**Elevation View (Middle):** Shows the bridge profile with a height of 600. The structure is labeled "2 x PRC/STUP 20x100 PROTECT 2-15-16/80".

**Cross-section View (Bottom):** Shows the bridge cross-section with dimensions 1800, 4000, and 300. The structure is labeled "2 x PRC/STUP 20x100 PROTECT 2-15-16/80".

**Detail Views:**

- Detail 1 (Top Left):** Shows a cross-section of the bridge deck with dimensions 1800 and 4000. The structure is labeled "2 x PRC/STUP 20x100 PROTECT 2-15-16/80".
- Detail 2 (Bottom Left):** Shows a cross-section of the bridge deck with dimensions 1800 and 4000. The structure is labeled "2 x PRC/STUP 20x100 PROTECT 2-15-16/80".
- Detail 3 (Bottom Right):** Shows a cross-section of the bridge deck with dimensions 1800 and 4000. The structure is labeled "2 x PRC/STUP 20x100 PROTECT 2-15-16/80".

Technical drawing of a reinforced concrete slab and its cross-sections.

**Plan View (Top):** Shows a rectangular slab with overall dimensions of 2600 mm by 10400 mm. Reinforcement bars are labeled 57, 5, 58, and 5. A section line A-A is indicated on the right.

**Cross-sections (Bottom):**

- Left Cross-section:** Shows a rectangular slab with a width of 300 mm and a height of 600 mm. Reinforcement bars 57 are shown at the top and bottom, and bar 5 is shown at the bottom.
- Middle Cross-section:** Shows a rectangular slab with a width of 300 mm and a height of 600 mm. Reinforcement bars 58 are shown at the top and bottom, and bar 5 is shown at the bottom.
- Right Cross-section:** Shows a T-shaped slab with a total width of 300 mm and a height of 600 mm. Reinforcement bars 58 are shown at the top and bottom, and bar 5 is shown at the bottom. The bottom flange has a width of 230 mm and a height of 550 mm. The top flange has a width of 130 mm and a height of 130 mm.

**Longitudinal Section (Bottom):** Shows a longitudinal section of the slab with dimensions 5 550, 800, and 9 000. Reinforcement bars 57 and 58 are shown.

**Detail (Bottom Right):** Shows a detail of a reinforcement bar with dimensions 130, 130, 550, and 230.

POL.	PRŮMĚR	Délka [mm]	KS	10 505 (R14)									
				R8	R10	R12	R14	R16	R18	R20	R22	R24	
1	R18	11 100	3							33,30			
2	R10	5 900	2		11,80								
3	R10	3 050	2		6,10								
4	R18	4 000	6								24,00		
5	R8	2 050	320	656,00									
6	R8	2 650	346	916,90									
7	R12	9 900	26			254,80							
8	R12	11 700	26			304,20							
9	R18	9 150	3							27,45			
10	R18	6 700	4							26,80			
11	R18	6 300	4							27,60			
12	R20	3 600	4								14,40		
13	R10	8 500	2		17,00								
14	R20	6 900	3								20,70		
15	R20	6 700	3								20,10		
16	R20	8 800	3								26,40		
17	R18	10 100	8							80,80			
18	R18	6 900	2							13,80			
19	R18	6 700	2							13,40			
20	R18	8 800	2							17,60			
21	R24	8 800	6										52,80
22	R14	6 700	3			20,10							
23	R20	6 900	3								20,70		
24	R16	11 700	6					70,20					
25	R16	9 800	6					58,60					
26	R24	10 100	2									20,20	
27	R24	3 600	2									7,20	
28	R14	11 700	6				70,20						
29	R14	9 800	6				58,60						
30	R24	10 900	2										21,80
31	R14	3 000	3			9,00							
32	R8	2 600	85	221,00									
33	R8	1 950	303	590,85									
34	R8	2 300	64	147,20									
40	R12	4 000	4			16,00							
41	R14	7 400	36				266,40						
42	R22	8 000	10									80,00	
43	R22	3 700	4									26,80	
44	R10	3 200	2		6,40								
45	R10	3 150	6		18,90								
46	R12	7 400	36			266,40							
47	R20	6 700	4								26,80		
48	R20	8 000	4								32,00		
49	R10	3 500	4		14,00								
50	R10	3 700	2		7,40								
51	R24	4 000	4										16,00
52	R16	6 700	4					28,80					
53	R16	4 000	2					3,00					
54	R16	8 000	12			</							

BETON C 30/37 XC1

[illegible]